

T-Builder SWAMP

Lord Zsezse Works: Lost Map #8 T-Builder SWAMP

Thank you for downloaded our product!
Look at the rest of our products if you liked this one. Click here!
You can vote for the next product on the front of our website:
<http://www.lordzsezseworks.com/>

If you have any problem, idea or suggestion, please write us!
If you like it, write a review!
The Lord Zsezse Works address: lordzsezseimage@gmail.com



ASSEMBLY INSTRUCTIONS

For the printing: This file is set up for US letter-sized (8.5"x11") sheets.
Turn off any 'fit to page' options in your printer driver.
If you are printing A4-sized sheets, you may want to reduce the print size to 95% of the original.

- 1, Print out the piece
- 2, Cut it out
- 3, Glue it on a bigger paper or foam

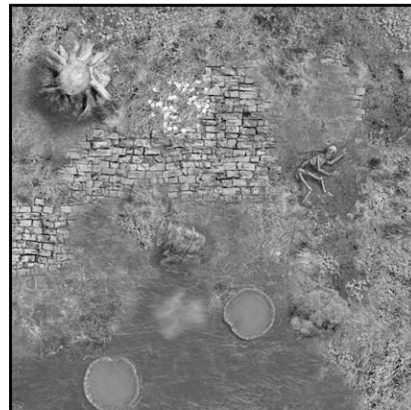
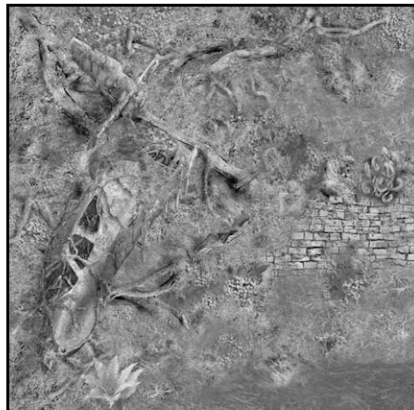
You can find there the T-Builder Swamp product.

If you would like to download the previous maps from the newsletter, click!

If you need grid turn on the Grid layer.
Use Adobe Reader 7.0 or higher.

What is the T-Builder?

It's a PDF file. Different object are in different layers, so you can see them clear.
You can find all the objects in the guide with pictures appended.
These pictures shows the spot, where the objects can be placed on the map.
With T-Builder you can place all the objects where you want. Build roads, trees, lakes and place other accessories. Maps are built from 6x6 inch based pieces, so you can edit your map free.
This way you are able to make a map as huge as you want.
After you print your map, you can rotate the tiles like at Ground Sets.



T-Builder SWAMP

Tile - A



T-Builder SWAMP

Tile - B

